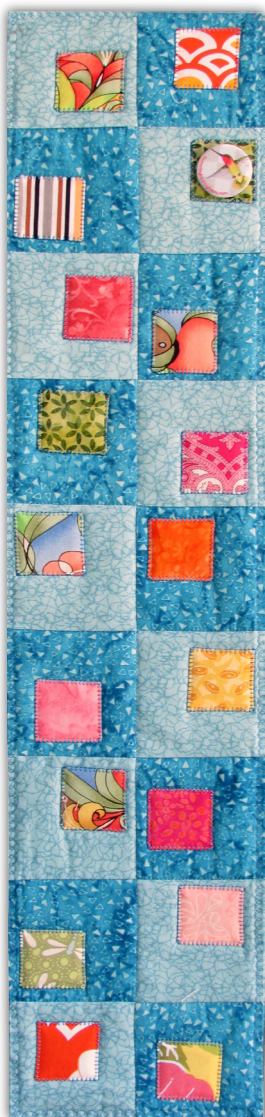


Pin Keep

Do you love collecting pins at quilt shows and events? Here's a fun and scrappy project to display your prized pin collection!



Fabric Requirements

Background (7x42" total)

From your stash, cut or select nine light-value and nine medium-value 3½" squares of a similar color.

Accent (2x42" total)

Cut or select eighteen 2" scrap squares in a variety of colors and prints.

Backing (8x42")

Cut one 8x29" backing strip. Use the remainder for a hanging sleeve.

Batting (9x30")

Additional supplies

ScrapTherapy Little Scrap Grid, two 9-patches, or eighteen squares.

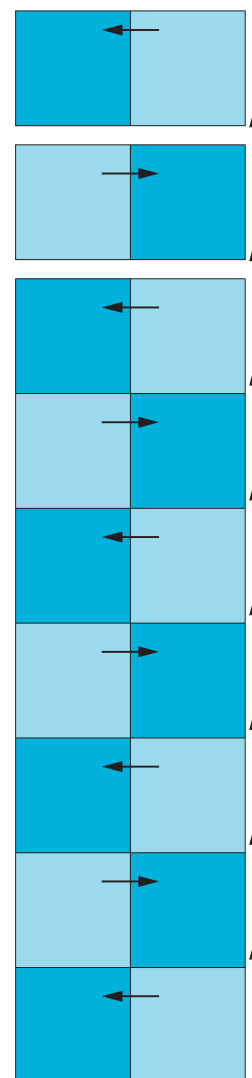
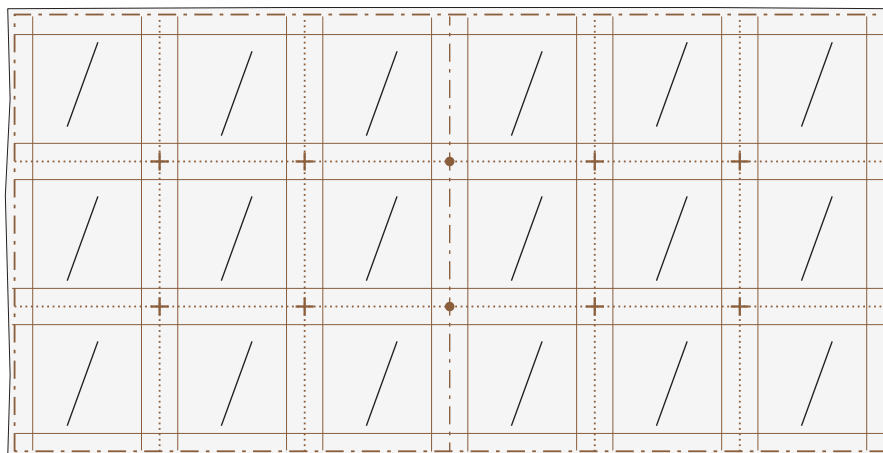
Each full panel of the Little Scrap Grid Interfacing can be broken into two sections; each section makes six 9-patch blocks. Instead of making 9-patch blocks, this pattern uses the lines on the interfacing to make fusible appliqué accent squares.

Make the Background

- Sew light and medium 3½" squares into two-patch units. Press the seam toward the darker fabric. Make nine 3½x6½" light/medium two-patch units.
- Sew the nine two-patch units together to make a vertical row, alternating light and medium fabrics. Press the row seams in one direction.
- The background measures 6½x27½". Set aside.

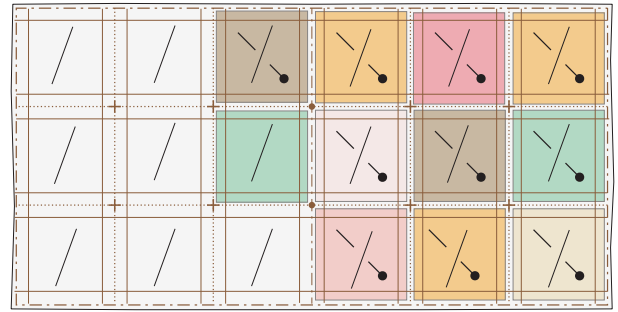
Make the Accent Squares

- Trim the interfacing along the dashed lines as shown below.
- With scissors or a rotary cutter, cut a slit about 1" long in the center of each square. Don't cut through any lines.

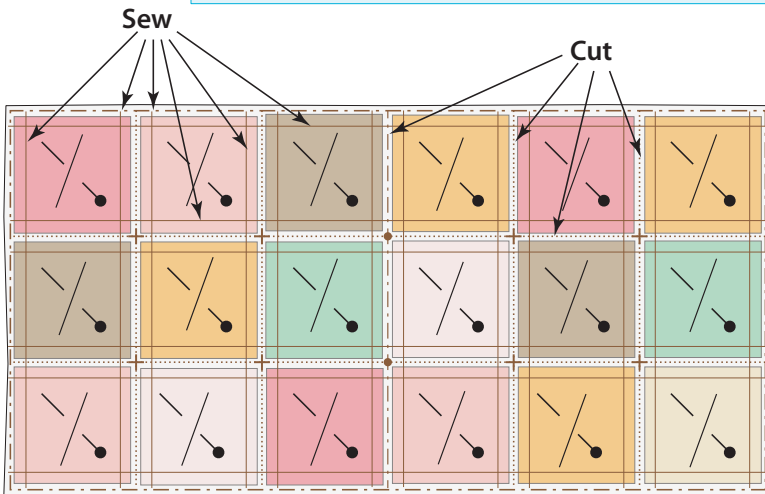
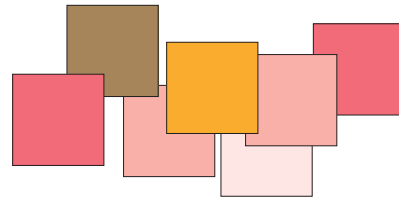


Make the Accent Squares (continued)

- Place the interfacing on your work surface, fusible side down. Lift up one corner of the interfacing and place a 2" scrap accent square right side up underneath the interfacing. Center the accent square within the printed dotted and dashed lines. The 2" square should be slightly smaller than the square created by the dotted/dashed lines, but larger than the solid lines that make the inner square. Pin the scrap from the top of the interfacing, across the slit.
- Repeat this process to pin all eighteen accent squares to the interfacing.
- Sew on the solid lines; cut on the dotted and dashed lines to make eighteen 2" accent squares with interfacing sewn on the lines on all four sides.



Even though placing the scraps UNDER the interfacing is awkward, you will be able to place pins strategically to avoid sewing over pins and pin-heads.



- Remove the pins. Without cutting through the corner stitching, trim the interfacing and scrap squares at the corners to reduce bulk. Turn each 2" accent scrap right side out through the interfacing slit. Use a turning tool to shape the corners, but be careful not to poke through the interfacing.
- Place each accent square on a background square as shown on the right, right side up, and fuse in place.

Complete the Pin Keep

- On your work table, layer the batting and backing right side up, and center the quilt top right side down, on the backing. Pin to secure the layers.
- Using a 1/4" seam, sew along the quilt top edge, leaving about 6" unsewn on one side for turning.
- Trim the batting and backing even with the quilt top, then turn the quilt right side out through the opening. Close the opening by hand, quilt lightly and secure the edges of each accent square with a blanket, satin, or zigzag stitch through all the layers.
- With the leftover backing fabric, make a small hanging sleeve and secure it to the back at one end.
- Pin your collectible pins onto the scraps and enjoy!

